

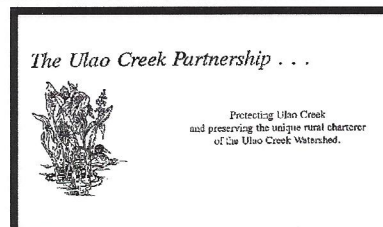
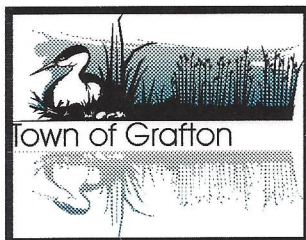
Ulao Creek Stormwater Management Plan



Prepared for
Town of Grafton,
Ozaukee County Land Conservation Dept.
and
Wisconsin Department of Natural Resources

May 1998

BRAA Project No. 81624



Ulao Creek Stormwater Management Plan

prepared by



**Bonestroo
Rosene
Anderlik &
Associates**

Engineers & Architects

and

 **Northern Environmental**SM
Hydrologists • Engineers • Geologists

Ulao Creek Stormwater Management Plan

Table of Contents

Acknowledgments

Executive Summary

1) Introduction	1
2) Goals and Objectives	3
3) Regulations	4
4) Ulao Creek Inventory	8
Physical Setting	8
Existing Conditions - Land Use	8
Drainage Structures	9
Waterways	9
Floodplain	14
Soils	15
Wetlands	17
Woodlands, Corridors and Natural Areas	20
Fishery	22
Groundwater Analysis	25
5) Water Quality Analysis	28
Existing Pollutant Loading	29
Proposed Future Pollutant Loading	29
Proposed Future Pollutant Loading with Implemented Recommendations	29
6) Water Quantity Analysis	30
Methodology	30
Design Criteria	31
Results	32

7)	Water Quality Management Practices Alternatives . . .	36
8)	Best Management Practices Recommendations	43
	Water Quality	43
	Water Quantity	44
	Ulao Creek Corridor	66
	Groundwater	69
	Public Education Program	70
9)	Stormwater Management Plan Implementation	72
	Time Schedule and Cost Estimates	72
	Financing Alternatives	75
10)	Summary of Recommendations	85
	Ulao Creek: Town of Grafton Stormwater Management Plan	85
	Ulao Creek: Village of Grafton Stormwater Management Plan	85
	Ulao Creek: City of Mequon Stormwater Management Plan	86
11)	Watershed Wide Implementation	87

Text Tables

4-1	Existing Land Use Percentages	9
5-1	Water Quality Results	28
6-1	Runoff Curve Numbers	30
6-2	Future Peak Discharges 2, 10, 100 year storms	32
7-1	Selected Preliminary Design Criteria for Wet Detention Basins	40
8-1	Ulao Swamp North Quantity Recommendations	47
8-2	Ulao Swamp South Quantity Recommendations	48
8-3	Interstate Highway-43 Quantity Recommendations	50
8-4	Falls Road East Quantity Recommendations	52
8-5	Falls Road West Quantity Recommendations	53
8-6	Ulao Creek Quantity Recommendations	56
8-7	Lakefield Road Quantity Recommendations	58
8-8	Pioneer Road East Quantity Recommendations	59
8-9	Pioneer Road West Quantity Recommendations	61
8-10	Comparison of 10 year Pre-settlement to 100 year Future with Recommendations Flows	61
9-1	Prioritized Town Structural BMP Recommendation Costs	73
9-2	Developer Driven Structural BMP Recommended Costs	73
9-3	Ulao Creek Corridor Costs	75
9-4	Alternative Financing Methods for Stormwater Management Activities	76
9-5	Nonpoint Source Cost Sharing Grants Under Wisconsin Priority Watersheds Program	83
9-6	State Assistance from Urban Nonpoint Source Pollution Control . . .	84

LIST OF APPENDICES

A Tables

1. Town of Grafton Ulao Creek Watershed Hydraulic Structures
2. Existing Conditions: Land Use
3. Fish Distribution Data for Ulao Creek
4. Stormwater Quality BMP's Matrix
5. Comparative Assessment of the Effectiveness of Best Management Practices
6. Comparison of Four Stormwater Wetland Designs
7. WDNR Approved Unit Area Pollutant Loading Rates
8. Water Quality Pollutant Loading: Existing Conditions - Sediment
9. Water Quality Pollutant Loading: Existing Conditions - Phosphorous
10. Water Quality Pollutant Loading: Existing Conditions - Lead
11. Water Quality Pollutant Loading: Future Conditions - Sediment
12. Water Quality Pollutant Loading: Future Conditions - Phosphorous
13. Water Quality Pollutant Loading: Future Conditions - Lead
14. Ulao Creek Future Land Use
15. Water Quantity Modeling Data

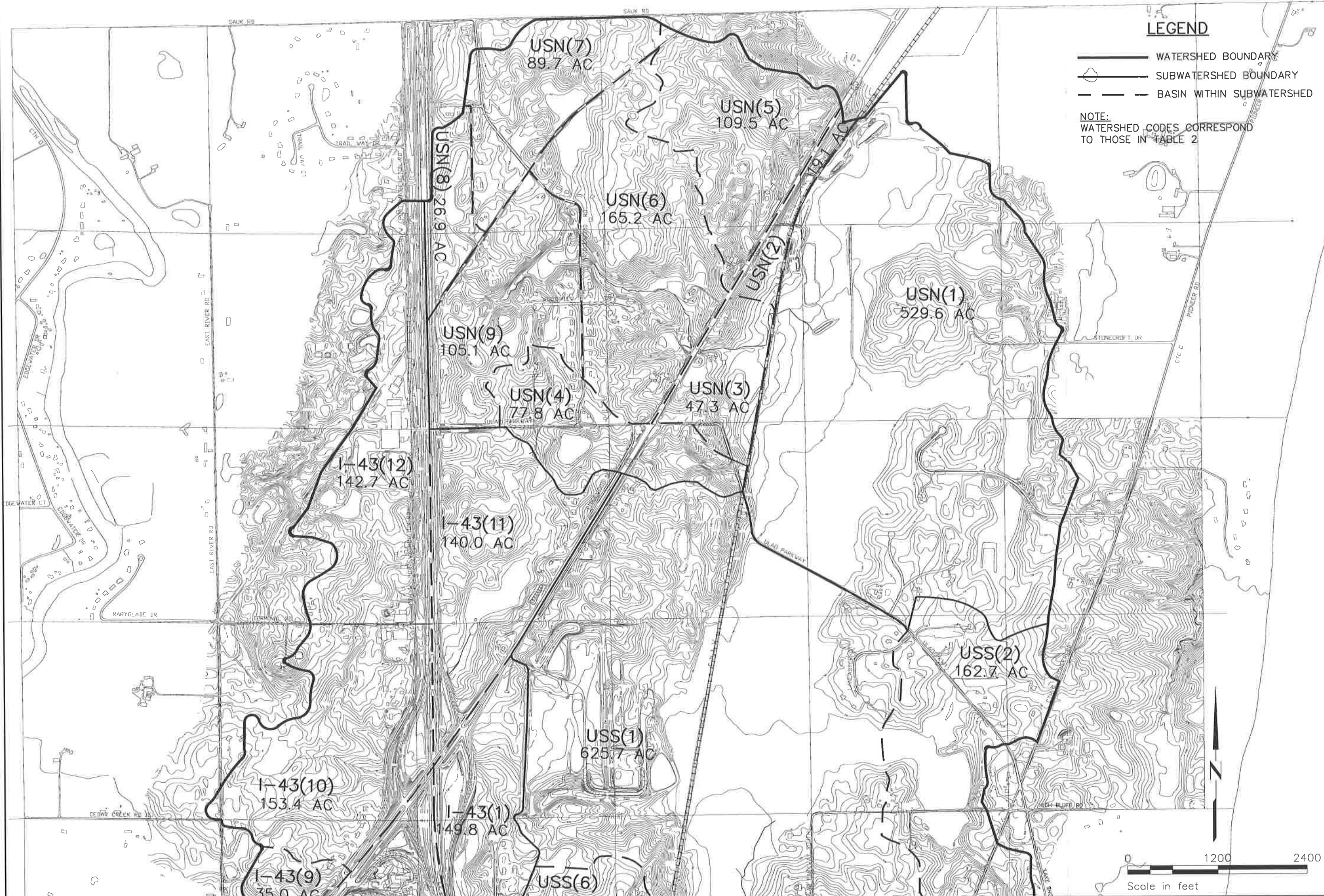
B. Maps & Figures

Figure 1. Ulao Creek Watershed

- Map
1. Ulao Creek Study Limits
 2. Watershed Boundary - North
 3. Watershed Boundary - Middle
 4. Watershed Boundary - South
 5. Culvert Inventory - North
 6. Culvert Inventory - Middle
 7. Culvert Inventory - South
 8. USDA Hydric Soils
 9. Wetland Inventory - North
 10. Wetland Inventory - Middle
 11. Wetland Inventory - South
 12. Ulao Swamp Survey
 13. Environmental Corridor - North
 14. Environmental Corridor - Middle
 15. Environmental Corridor - South
 16. Water Quantity BMP's Recommendations - North
 17. Water Quantity BMP's Recommendations - Middle
 18. Water Quantity BMP's Recommendations - South
 19. Water Quality BMP's Recommendations
 20. Ulao Creek Corridor BMP's Recommendations

C. Groundwater Study - Northern Environmental Technologies, Inc.

- D. Village of Grafton – Northeast Drainage Study (Tributary to Ulao Creek)
- E. City of Mequon – Storm Water Management Plan: Ulao Creek Watershed
- F. WDNR Model Stormwater Zoning Ordinance
- G. Town of Grafton Stormwater Management Planning Checklist



LEGEND

- WATERSHED BOUNDARY
- SUBWATERSHED BOUNDARY
- - - BASIN WITHIN SUBWATERSHED

NOTE:
WATERSHED CODES CORRESPOND
TO THOSE IN TABLE 2



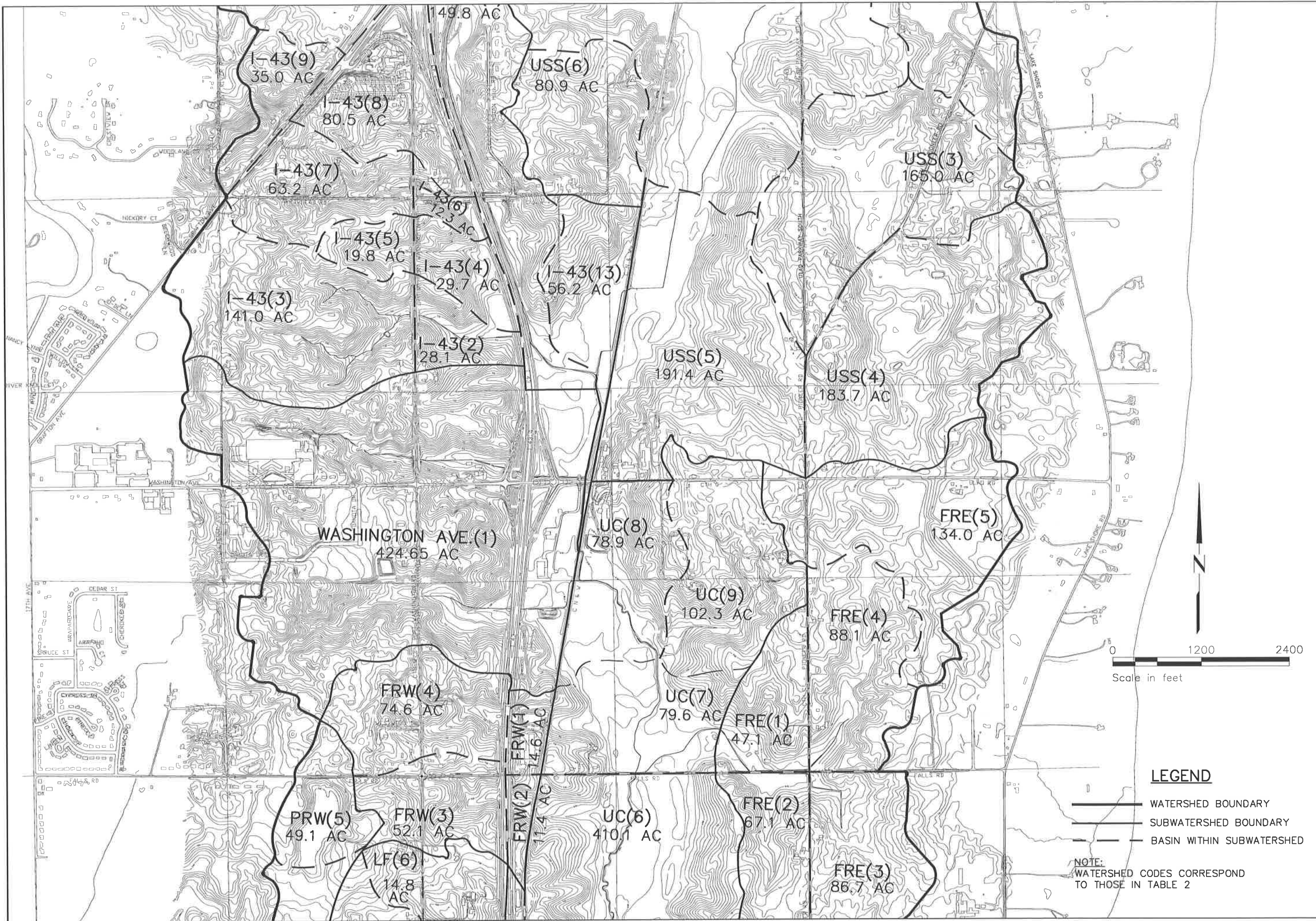
AJS	SURVEY
SRS	DRAWN
BSL	DESIGNED
ARS	APPROVED
10-13-97	DATE
81624m02	FILE:

Engineers & Architects
St. Paul, Minnesota
Mequon, Wisconsin



MAP 2 - WATERSHED BOUNDARY - NORTH
ULAO STORMWATER MANAGEMENT PLAN
TOWN OF GRAFTON
OZAUKEE COUNTY, WISCONSIN

81624	SHEET
DF	OF



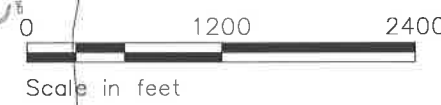
SURVEY
DRAWN
DESIGNED
APPROVED
DATE
FILE:

Engineers & Architects
St. Paul, Minnesota
Mequon, Wisconsin



MAP 3 - WATERSHED BOUNDARY - MIDDLE
ULAO STORMWATER MANAGEMENT PLAN
 TOWN OF GRAFTON
 OZAUKEE COUNTY, WISCONSIN

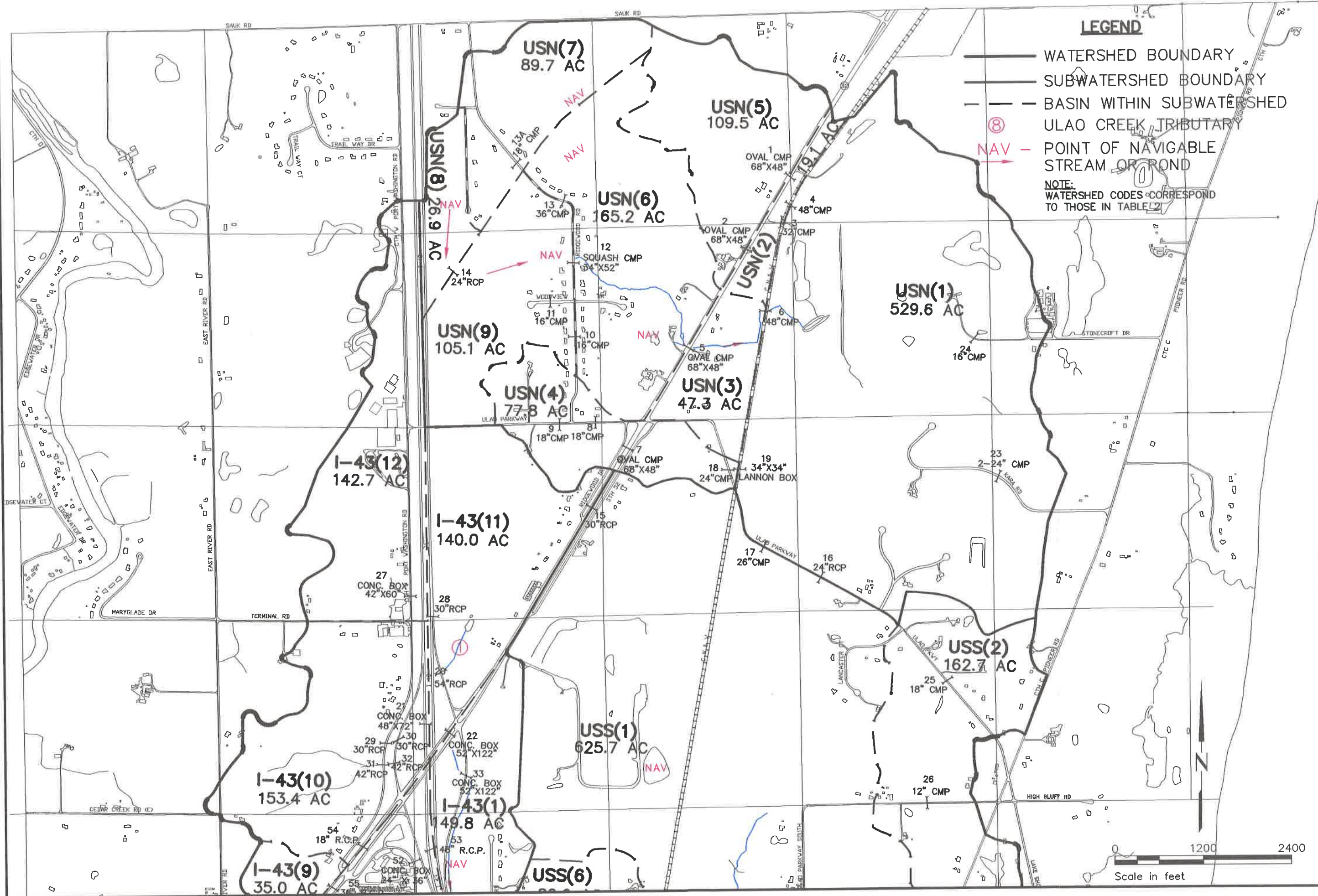
81624
SHEET OF



LEGEND

- WATERSHED BOUNDARY
- SUBWATERSHED BOUNDARY
- BASIN WITHIN SUBWATERSHED

NOTE:
WATERSHED CODES CORRESPOND
TO THOSE IN TABLE 2

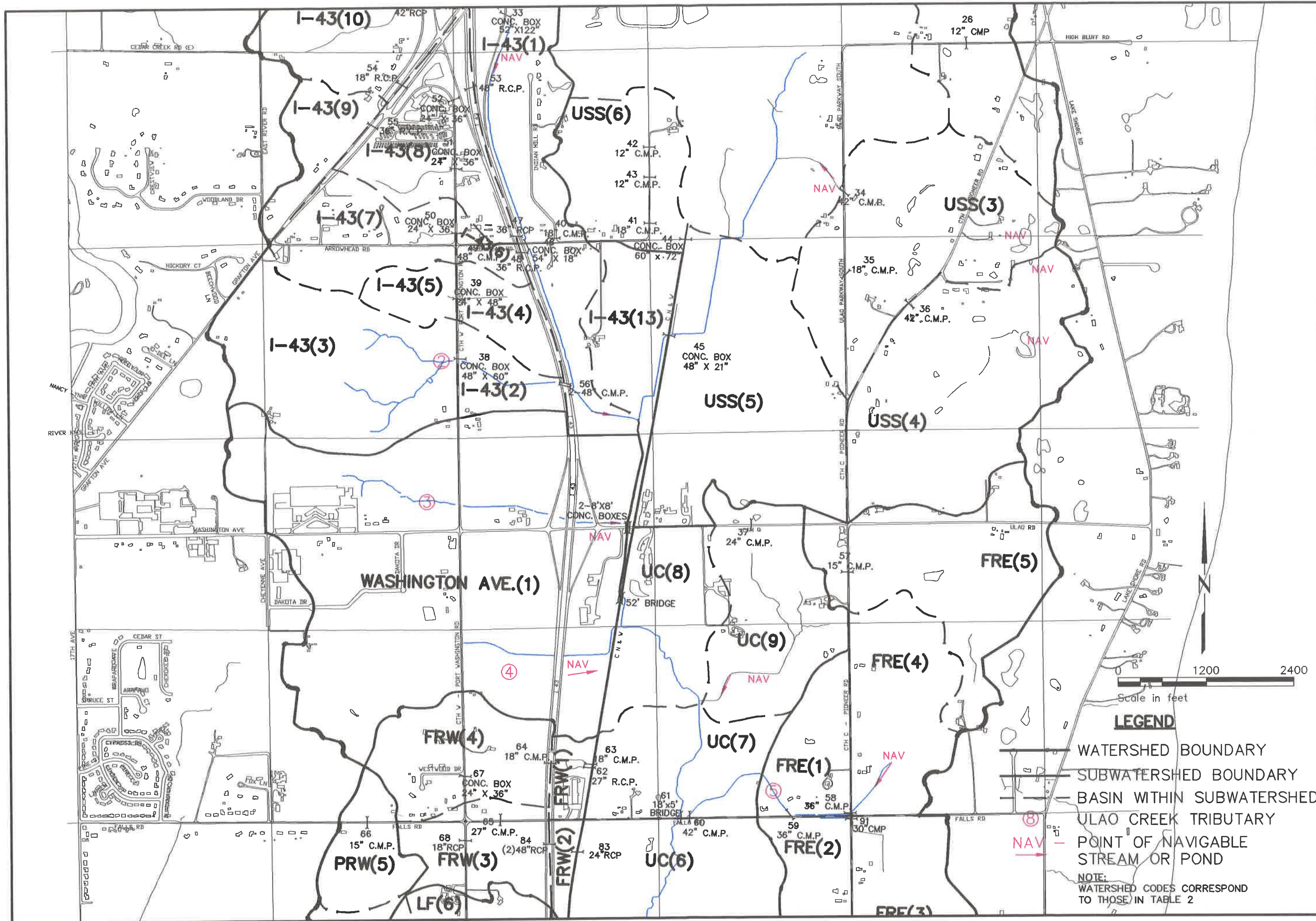


AIS SURVEY
SRS DRAWN
BSL DESIGNED
ARS APPROVED
DATE 9-22-97
FILE: 81624-m05

Engineers & Architects
St. Paul, Minnesota
Mequon, Wisconsin



MAP 5 - CULVERT INVENTORY - NORTH
ULAO STORMWATER MANAGEMENT PLAN
TOWN OF GRAFTON
OZAUKEE COUNTY, WISCONSIN

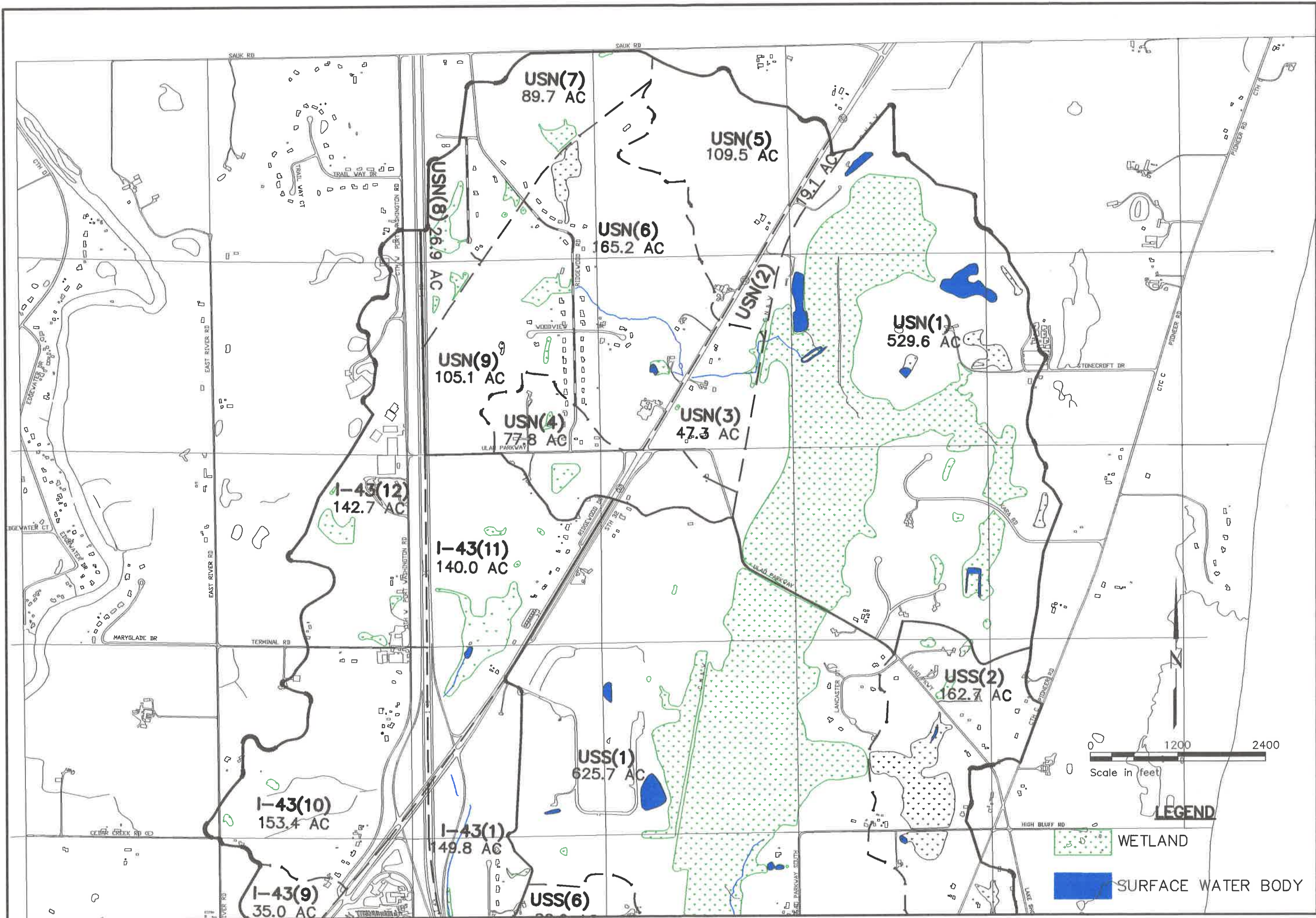


AUS	SURVEY
SRS	DRAWN
BSL	DESIGNED
ARS	APPROVED
9-22-97	DATE
81624.m06	FILE:

Engineers & Architects
St. Paul, Minnesota
Mequon, Wisconsin



81624	
SHEET	OF

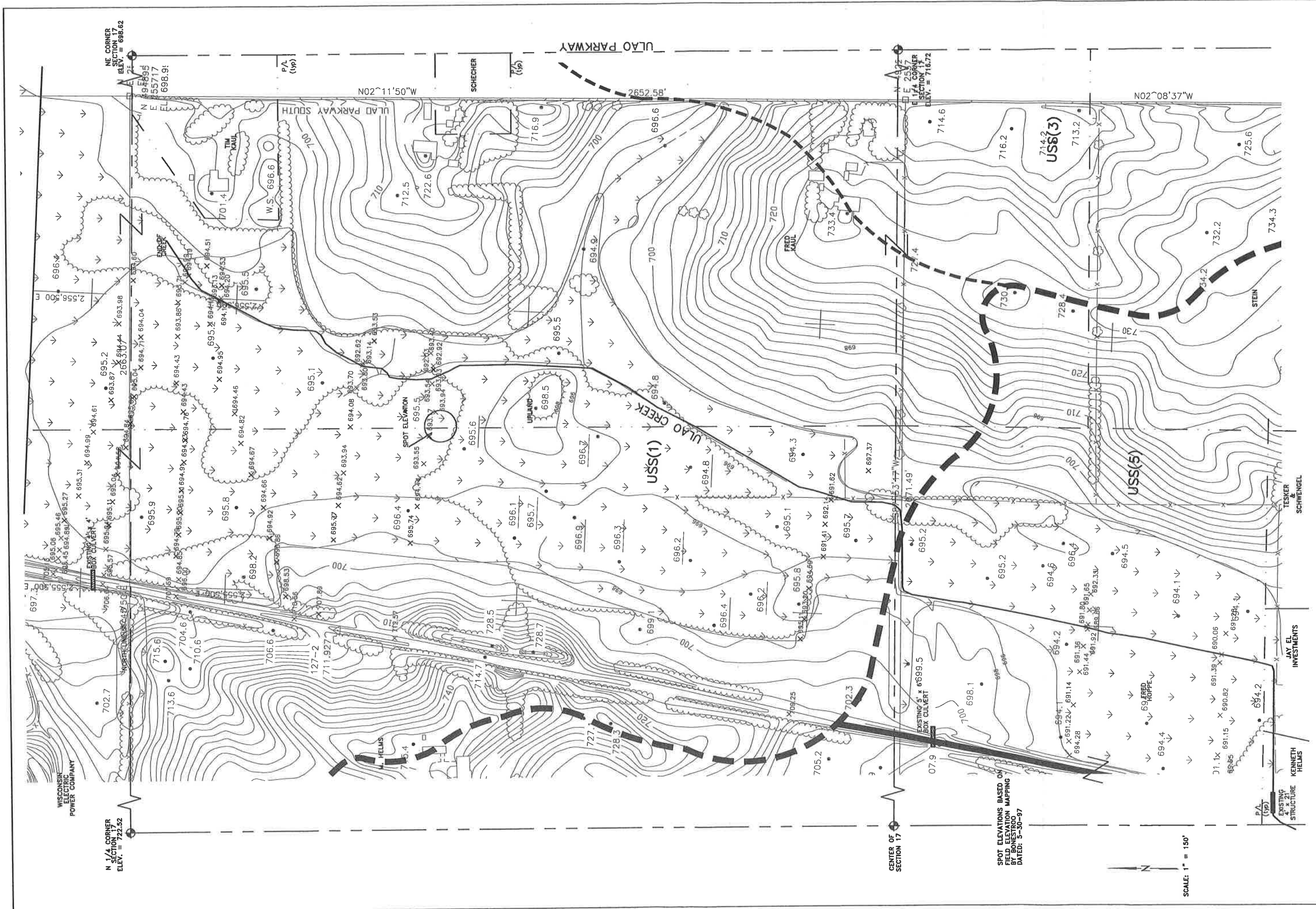


MAP 9 -- WETLAND INVENTORY -- NORTH
ULAO STORMWATER MANAGEMENT PLAN
 TOWN OF GRAFTON
 OZAUKEE COUNTY, WISCONSIN



Engineers & Architects
 St. Paul, Minnesota
 Mequon, Wisconsin

SURVEY	DRAWN	DESIGNED	APPROVED	DATE	FILE:
AJS	SRS	BSL	ARS	9-22-97	81624m09



WISCONSIN ELECTRIC POWER COMPANY

N 1/4 CORNER SECTION 17
ELEV. = 722.52

NE CORNER SECTION 17
ELEV. = 698.91

CENTER OF SECTION 17
ELEV. = 716.72

SPOT ELEVATIONS BASED ON FIELD ELEVATION MAPPING BY BONESTROO DATED: 5-30-97

SCALE: 1" = 150'

SHEET	85203	OF	07
Bonestroo Rosene Anderlik & Associates Engineers & Architects St. Paul, Minnesota Mequon, Wisconsin			
SURVEY	AS	DESIGNED	ARS
DRAWN	SRS	APPROVED	ARS
DATE	6-17-97	COMAL	
REVISION			
DATE			
© BONESTROO, ROSENE, ANDERLIK & ASSOCIATES, INC. 1997 85203 42\CAU\852\85203\85203m12			

MAP 12
ULAO SWAMP SURVEY
 ULAO CREEK WATERSHED
 OZAUKEE COUNTY, WISCONSIN

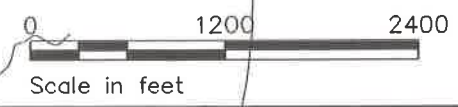
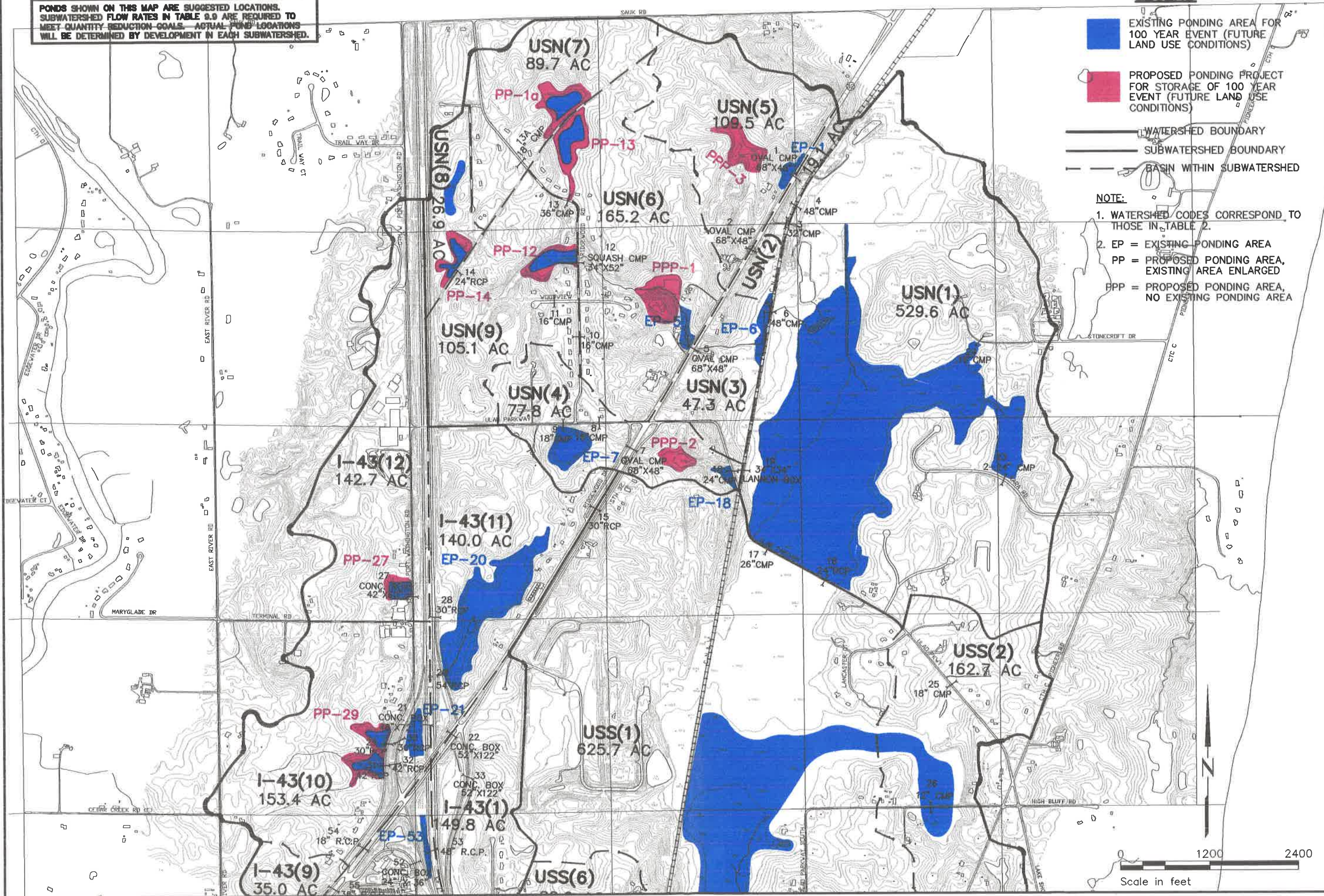
PONDS SHOWN ON THIS MAP ARE SUGGESTED LOCATIONS. SUBWATERSHED FLOW RATES IN TABLE 9.9 ARE REQUIRED TO MEET QUANTITY REDUCTION GOALS. ACTUAL POND LOCATIONS WILL BE DETERMINED BY DEVELOPMENT IN EACH SUBWATERSHED.

LEGEND

- EXISTING PONDING AREA FOR 100 YEAR EVENT (FUTURE LAND USE CONDITIONS)
- PROPOSED PONDING PROJECT FOR STORAGE OF 100 YEAR EVENT (FUTURE LAND USE CONDITIONS)
- WATERSHED BOUNDARY
- SUBWATERSHED BOUNDARY
- BASIN WITHIN SUBWATERSHED

NOTE:

1. WATERSHED CODES CORRESPOND TO THOSE IN TABLE 2.
2. EP = EXISTING PONDING AREA
PP = PROPOSED PONDING AREA, EXISTING AREA ENLARGED
PPP = PROPOSED PONDING AREA, NO EXISTING PONDING AREA



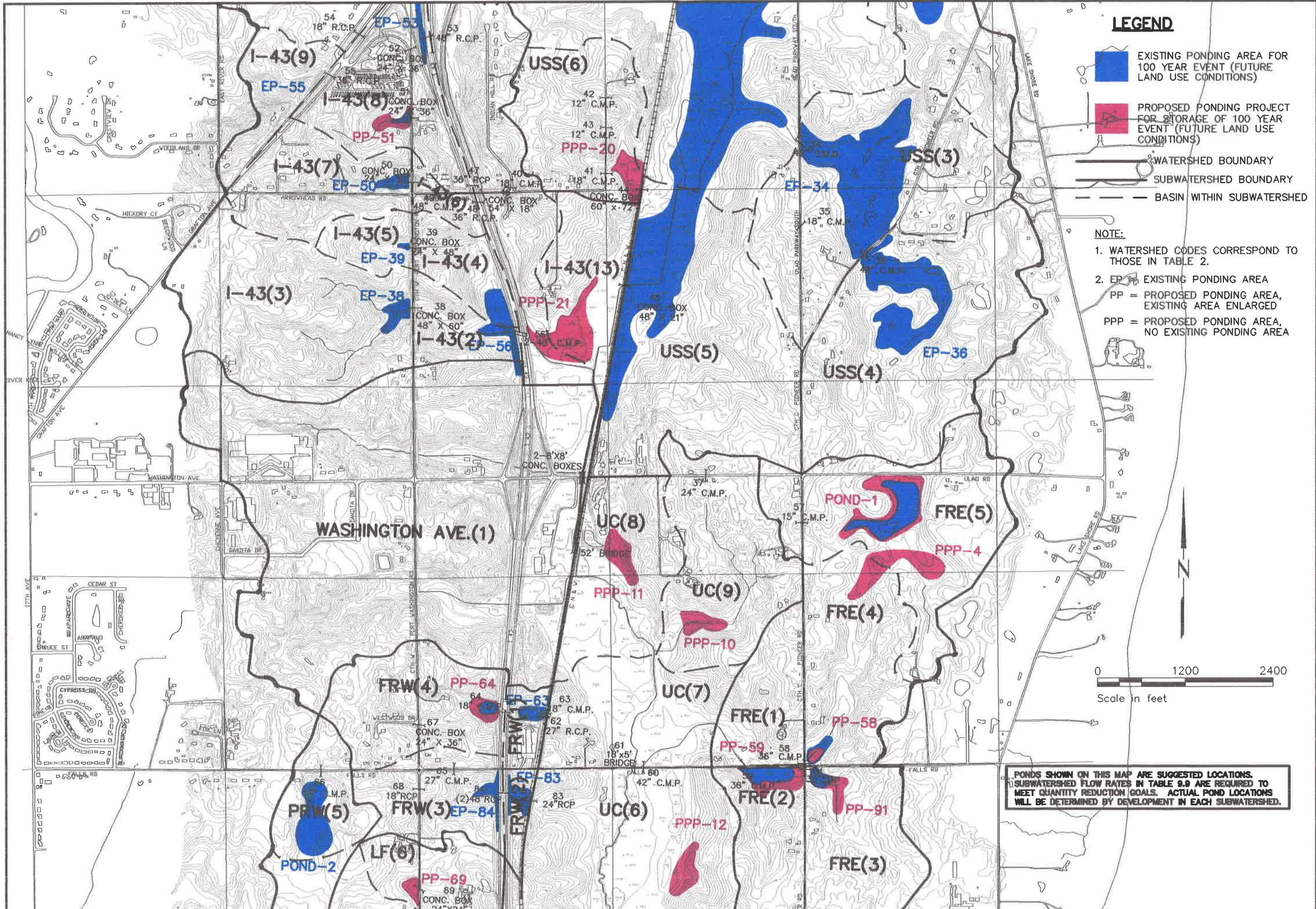
AJS	SURVEY
SRS	DRAWN
BSL	DESIGNED
ARS	APPROVED
10-13-97	DATE
81624m02	FILE

Engineers & Architects
 St. Paul, Minnesota
 Mequon, Wisconsin



MAP 16 - WATER QUANTITY - NORTH
BEST MANAGEMENT PRACTICES RECOMMENDATIONS
 ULAO STORMWATER MANAGEMENT PLAN
 OZAUKEE COUNTY, WISCONSIN

81624	SHEET	OF
-------	-------	----

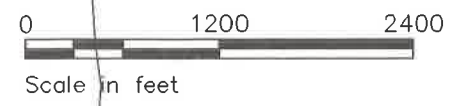


LEGEND

- EXISTING PONDING AREA FOR 100 YEAR EVENT (FUTURE LAND USE CONDITIONS)
- PROPOSED PONDING PROJECT FOR STORAGE OF 100 YEAR EVENT (FUTURE LAND USE CONDITIONS)
- WATERSHED BOUNDARY
- SUBWATERSHED BOUNDARY
- BASIN WITHIN SUBWATERSHED

NOTE:

1. WATERSHED CODES CORRESPOND TO THOSE IN TABLE 2.
2. EP = EXISTING PONDING AREA
 PP = PROPOSED PONDING AREA, EXISTING AREA ENLARGED
 PPP = PROPOSED PONDING AREA, NO EXISTING PONDING AREA



PONDS SHOWN ON THIS MAP ARE SUGGESTED LOCATIONS. SUBWATERSHED FLOW RATES IN TABLE 9.9 ARE REQUIRED TO MEET QUANTITY REDUCTION GOALS. ACTUAL POND LOCATIONS WILL BE DETERMINED BY DEVELOPMENT IN EACH SUBWATERSHED.

AJS	SRS	BSL	ARS	9-22-97	81624m17
SURVEY	DRAWN	DESIGNED	APPROVED	DATE	FILE:

Engineers & Architects

**Bonestroo
Rosene
Anderlik &
Associates**

St. Paul, Minnesota
Mequon, Wisconsin

MAP 17—WATER QUANTITY—MIDDLE

BEST MANAGEMENT PRACTICES RECOMMENDATIONS

ULAO STORMWATER MANAGEMENT PLAN
OZAUKEE COUNTY, WISCONSIN

81624	OF
SHEET	OF